

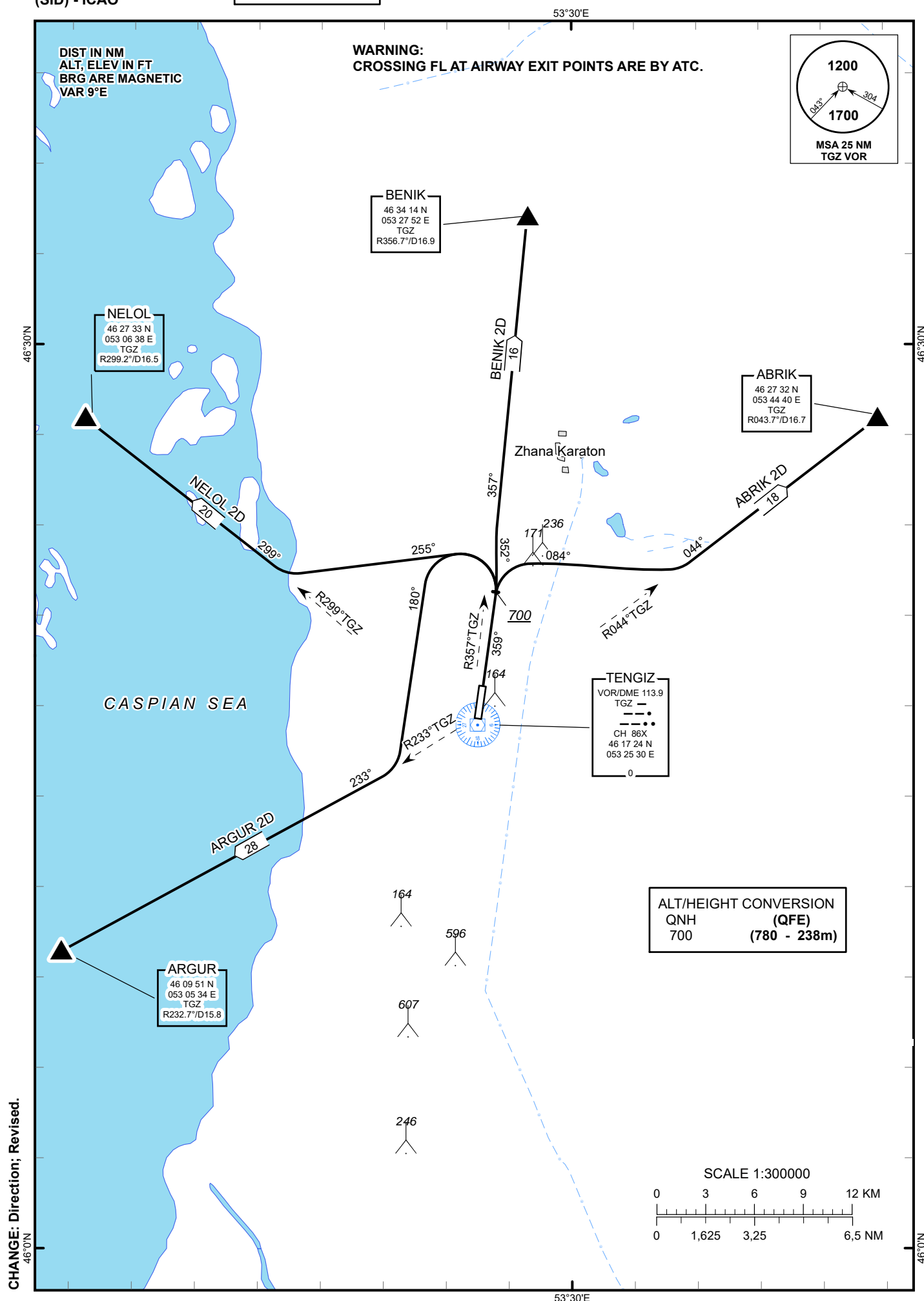
STANDARD DEPARTURE
CHART - INSTRUMENT
(SID) - ICAO

TRANSITION ALTITUDE
10000 FT

TENGIZ TOWER 119.20

ABRIK 2D, ARGUR 2D,
BENIK 2D, NELOL 2D.

TENGIZ
RWY 36



STANDARD DEPARTURE ROUTES - INSTRUMENT (SID) TENGIZ RWY 36

ARGUR 2D

After take-off climb straight ahead to 700 or above, turn LEFT on track 180° until intercept R233°TGZ, then proceed on track 233° to ARGUR (N460951 E0530534).
--

NELOL 2D

After take-off climb straight ahead to 700 or above, turn LEFT on track 255° until intercept R299°TGZ, then proceed on track 299° to NELOL (N462733 E0530638).
--

BENIK 2D

After take-off climb straight ahead to 700 or above, turn LEFT on track 352° until intercept R357°TGZ, then proceed on track 357° to BENIK (N463414 E0532752).
--

ABRIK 2D

After take-off climb straight ahead to 700 or above, turn RIGHT on track 084° until intercept R044°TGZ, then proceed on track 044° to ABRIK (N462732 E0534440).
